

PART OF S.E. 1/4, SEC. 32 & S.W. 1/4, SEC. 33, T.7N., R.2W., S.L.B. & M.

PLAIN CITY  
BLOCK 1, PLAT A

TAXING UNIT: 21

SCALE 1" = 50'

SEE PAGE 30

6

2

1

2275

NORTH

STREET

S 89° 17' E

WEST STREET

WEST STREET

SEE PAGE 26

SEE PLAT B  
PAGE 51

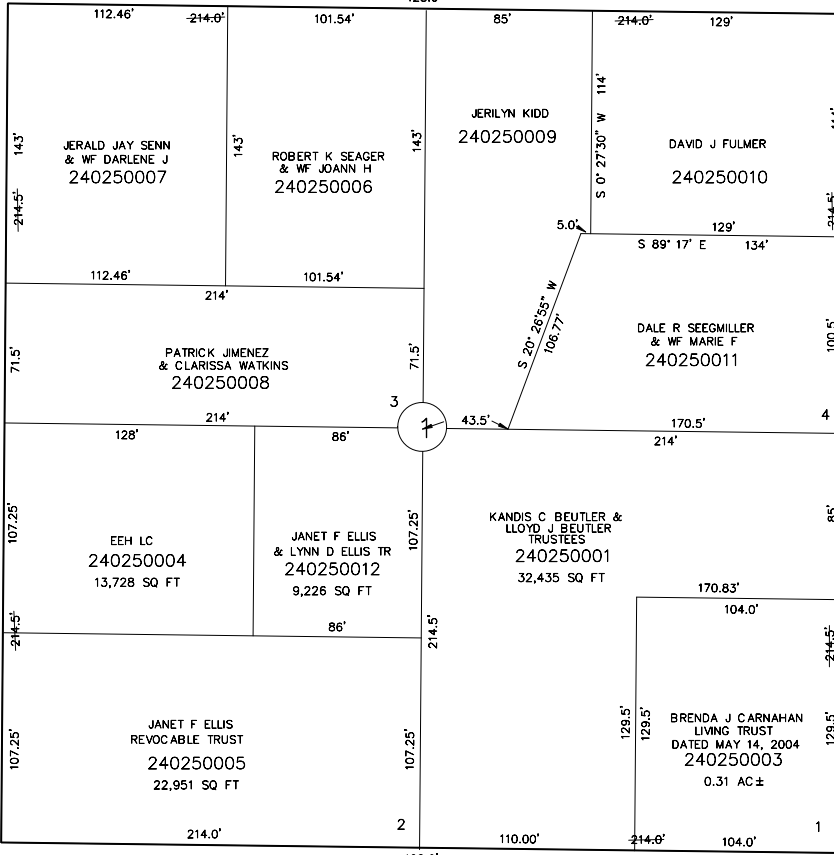
2

4

WEST STREET

N 0° 27' 30" E

429.0'



SEE PLAT B, PAGE 49

SEE ORIGINAL DEDICATION  
PLAT OF PLAIN CITY IN  
BOOK 5, PAGE 80 OF RECORDS.